



LARGE SQUARE PUNKY ROOSTER FLOCK RUG WITH 10 TEXTURE MENU

NOTE:

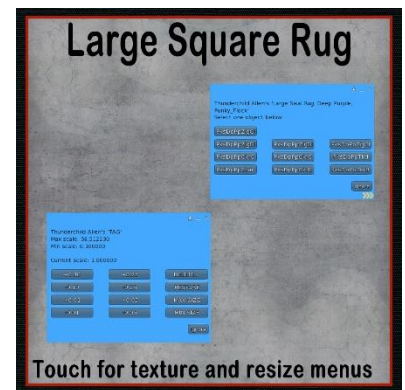
THE PERMISSIONS FOR THE RUG IS COPY ONLY.

This is one rug with ten (10) textures accessed by menu. Touch the front of the rug to get the texture and resize menus. Both menus will appear on top of each other, so, move the top menu out of the way.

A Colorful rooster has a spiked Mohawk style Comb, a pierced beak with a chain leading to a large safety-pen through his wing and dangles a rabbit's foot. He's wearing tall linemen style boots with extra sharp spurs added. There are multiple roosters around the edge and one larger rooster in the middle.

There are fifteen basic rug color schemes, Black, Brown, Burgundy, Burnt Orange, Deep Purple, Forrest Green, Grass Green, Gray Blue, Hunter Green, Lite Fuchsia, Lite Gray, Mauve, Prime Blue, Red Orange, and Violet. For each color there is a pattern with no rooster, one with a single rooster and one with multiple roosters.

Textures are from inventory texture collections and artwork. Punky Rooster is the mascot for the online radio station KOCK.rocks BiPolar Radio at <http://kock.rocks>.



FEATURES

- One (1) rug with ten (10) designs.
- Menu for texture selection.
- Resizing menu for size adjustment.
- Matching or similar Real-Life products on-line.

DEMOS & HOLOVEND VIEWS

There are demo models available on the Marketplace, inworld on Casper Vendors and HoloVendors. Demo models will last for several hours to a day.

You can see this item inworld at the at the Art Store on the HoloVendor there. Art Store SLurl: <http://maps.secondlife.com/secondlife/Milda/89/153/55>.

TOS

TCGWS TOS: <https://thunderchild.net/SL/doc/TCGWS-TOS.pdf>

Second Life Terms of Service <https://www.lindenlab.com/legal/second-life-terms-and-conditions>

UNPACKING

CasperVend items come in a Mesh Crate and will probably show up in your Objects Folder. You'll need to rez or wear the delivery crate for it to open and copy to your inventory. The same crate is delivered by the SL Marketplace. It will go to your Received Items Folder. The front label on the crate has a menu to select the label, a blank, the TCGWS logo, and any information images for the

product. The crate will open a menu to unpack when it is rezzed. After unpacking, it will offer to delete or cancel. Keep a copy of the create so you can always get the textures if you need them.

ADDITIONAL INFORMATION

The TCGWS project homepage is <https://thunderchild.net>. There is a free product "Business & Artist Information" from the SL MP or CasperVend in-World. Contact AJ Leibengeist aka Thunderchild Allen inworld for questions or issues.

AVAILABILITY

Matching and similar Real-Life products are provided by on-line third-party on-demand companies. My goal is to match SL and RL products as much as possible. If there is a product from my SL shops that you'd like to have in Real Life, let me know!

Stores include RedBubble.com, Society6.com, SpoonFlower.com, [TeePublic](http://TeePublic.com)